



Technical Specification

Product fiche		
Trademark	Blaupunkt	
Model ID	236/2070-GB-3B-EGP 236/2070-GB-3B-EGPS	236/2070-GB-3B-EGDP 236/2070-GB-3B-EGDPS (Models with inbuilt DVD player)
Energy efficiency class	A	
Visible screen size (diagonal)	60 cm / 23.6 Inches	
On mode power consumption	25.0 W	
Annual energy consumption *1	37 kWh	
Standby power consumption *2	<0.50 W	
Off mode power consumption	0 W	
Screen resolution	1366 (H) x 768 (V)	
*1: Energy consumption XYZ kWh per year, based on the power consumption of the television operating 4 hours per day for 365 days. The actual energy consumption will depend on how the television is used. *2: When the TV is turned off with the remote control/standby button and no function is active.		

Additional Technical Information

	236/2070-GB-3B-EGP 236/2070-GB-3B-EGPS	236/2070-GB-3B-EGDP 236/2070-GB-3B-EGDPS (Models with inbuilt DVD player)
RF	75 ohm Antenna / Analog / DVB	
Inputs	2 x HDMI, 1 x USB, 1 x SCART, 1 x RJ45 LAN/Ethernet, 1 x Mini Composite/Video & L/R Audio shared for Composite/Video & Component/YpBPr, 1 x Mini Component/YpBPr	
Sound Outputs	1 x 3.5mm Headphone, 1 x Digital Optical Audio Out	
Speaker / Amplifier Watts (RMS)	2 x 5 / 2 x 3	
Voltage and power consumption	AC 220V~240V; 50Hz 25/40W (ecomode/max)	AC 220V~240V; 50Hz 25/50W (ecomode/max)
Dimensions including stand (mm)	560W x 386H x 140D	
Net weight (Kgs)	3.8	4.2
Wall Mounting	VESA 100 x 100 (mm)	

HDMI

The terms HDMI, HDMI High-Definition Multimedia Interface, and the HDMI Logo are trademarks or registered trademarks of HDMI Licensing Administrator, Inc.



Quick Start Set Up Guide

For information on using the TV's features, please refer to the operating Instructions.

Model Numbers

236/2070-GB-3B-EGP

236/2070-GB-3B-EGPS

236/2070-GB-3B-EGDP

236/2070-GB-3B-EGDPS

Register For Your

Manufacturers Warranty

Register your manufacturers guarantee online within 14 days of purchase at www.registertv.co.uk/blaupunkt

Quick & easy guide for setting up your TV

What is included in the box

Using the remote control

Setting up the TV for the first time - including attaching the stand

Connecting other devices to the Television

Need help setting up or using your TV?

Please contact the UK & ROI Helpline*

Telephone UK 0330 024 0802 or ROI 01443 3940

Online support at: www.umc-uk.co.uk

Email support at: service@umc-uk.co.uk

*Calls to 0330 numbers are charged at standard call rates and are included as part of any bundled minutes with your phone provider. Calls to the ROI number are charged at the local call rate. The telephone opening hours are: Monday to Friday 8.30am to 6pm, Saturday 9am – 5pm. Bank Holidays - 10am to 4pm

Closed Christmas and New Years day



What is included in the box

- Accessories included with this TV are the following accessories
- 1 x Quick Start Guide
 - 1 x Stand installation pack
 - 1 x Safety Leaflet
 - 1 x Remote Control and 2 x AAA Batteries

Additional Accessories

Should you wish to connect older/analogue devices to your television, you can purchase the necessary cables either from your retailer or at www.umc-uk.co.uk/cables

Mini Composite/AV Cable - Required if you wish to connect a device with YpBPr/Component output to the TV's Mini AV Input

AV/Composite/CVBS output to the TV's Mini AV Input



RF Cable



Mini YpBPr Cable - Required if you wish to connect a device with YpBPr/Component output to the TV's Mini YpBPr Input



Connecting Component/YpBPr - you will need both the Mini YpBPr Cable and the Mini Composite/AV Cable. The YpBPr cable will be used exclusively for video (red/green/blue) and the AV cable will be used for audio (Red/White while Yellow stays unconnected).

Connecting Composite/AV - Mini Composite/AV Cable will be enough for both video and sound.

Please save your box/packaging as you will need this in the event of warranty/service repair or support. We are unable to carry out warranty/service if you are unable to package it correctly. The safest way to package your item in the event of warranty/service repair is in its original box/packaging.

Using the remote control



- STANDBY** - Switch on TV when in standby or vice versa
MUTE - Mute the sound or vice versa
RADIO - Switch to radio whilst in Freewiew source
USB - Switch to USB source
DVD - Switch to DVD source
- NUMBER BUTTONS** - 0 - 9 to select a TV channel directly.
TV GUIDE - Opens the 7 Day TV Guide (Freewiew mode)
RETURN - To return to the previous channel viewed
- VOL (+/-)** - To increase / decrease the sound level
S.MODE - Scrolls through picture mode options
FAV - To display favourites menu
CH (+/-) - To increase or decrease the channel being watched
MENU - To display OSD menu
EXIT - To exit all menus
BACK - Allows you to navigate the on-screen menus and adjust the system settings to your preference
SOURCE - To display the input/source menu
INFO - Press twice for programme information about current programme
- ASPECT** - To switch the screen between the different picture formats
SLEEP - Press repeatedly to cycle through the sleep options
AUDIO - To change the audio language (if available)
SUBTITLE - To switch the dialogue at the bottom of the screen (on/off)
TEXT - To enter/exit Text
TEXT HOLD - Teletext mode - Hold current page which is displayed (Analogue TV)
DISPLAY - To switch off the screen when listening to radio
TEXT/DVD ZOOM - Zoom function for Teletext and DVD
DVD MENU/RECORD - Access the DVD root menu and USB record function
REPEAT - To restart the current chapter
SKIP - To advance forward to the next chapter
STOP - To stop the playback/Eject Disc
PAUSE - (To EJECT the disc press/hold the **PAUSE** button for 4 seconds)
PLAY - To play in fast forward mode
STOP - To play/pause
DVD SETUP/REC LIST - Opens up DVD Menu or Opens the list of what has been previously recorded
GOTO - To go to a specific chapter
A-B - Press once to set point, press a second time to return to point
ANGLE - Select different angle of DVD
REPEAT - To repeat playback

For Models with Integrated DVD players
For Models with PVR Function
For Models with USB Playback

Setting up the TV set for the first time

To obtain a copy of your Operating Instructions, please go to: www.umc-uk.co.uk/instruction-manuals/blaupunkt

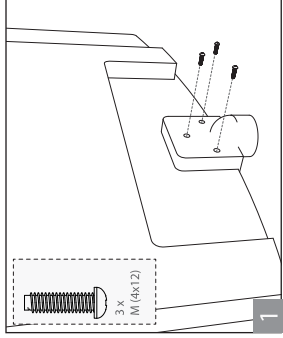
1 Fitting the stand

For stand installation, there are two types of screws provided as shown below. To complete the stand installation you will require a cross head screw driver. Place the TV set on a flat and clean surface with the panel facing downwards to avoid damage.

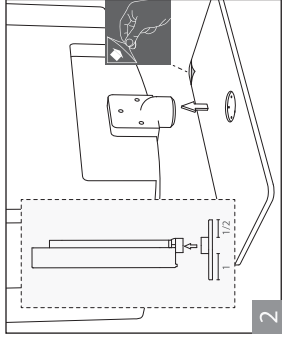
3 x M (4x12)

4 x ST (4x12)

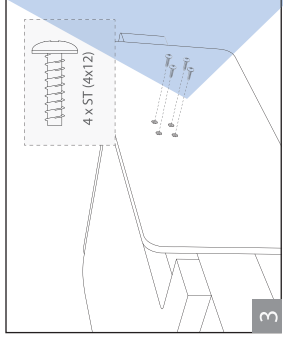
Used for attaching the stand base to the stand neck (fig.3)



Attach the stand neck to the rear of the TV set using the 3 x M(4x12) screws.



Peel off the protective plastic cover then attach the stand base to the neck.



Secure the base to the neck by using the 4 x ST(4x12) screws provided.

HELPFUL ADVICE FOR FIRST TIME STAND INSTALLATION

When securing the self-tapping screw/s into the base of the stand (on first installation) the screw/s will be naturally tight as they create a thread in the plastic of the stand neck in order to support a TV of this size.

a) Ensure the cross head screw driver tip fits correctly into the head of the screw and that it is not too big or small.

b) Screw in all screws individually and partially before tightening all of the screws fully.

c) If they become very tight try loosening them slightly and then re-tightening them once again as this will continue the process of creating the thread for the screws.

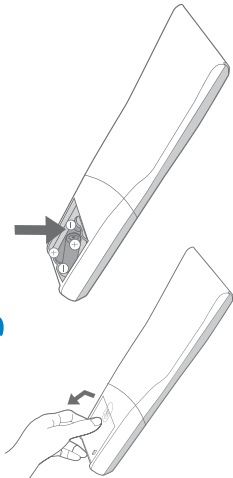
Button layout



For models with built in DVD player

- 1 Stop/Eject Disc
- 2 Play/Pause Disc
- 3 Volume up and menu right
- 4 Volume down and menu left
- 5 Programme/Channel up and menu up
- 6 Programme/Channel down and menu down
- 7 Displays Menu/OSD
- 8 Displays the input source menu
- 9 Standby Power On/Off

2 Installing batteries



Remove the battery cover from the rear of the remote control and insert the AAA batteries which are supplied in the accessory pack. Ensure that the polarity of the batteries is as shown in the battery compartment. Replace the battery cover. The remote control is ready for use.



To receive Freeview channels, in particular Freeview HD channels, you will need a Digital TV aerial and be in a good Freeview coverage area. You can check coverage for your postcode at www.freeview.co.uk.

Please note that any Freeview HD channels found during tuning will be placed in channel positions above 100. For example, 101 (BBC1 HD) 102 (BBC2 HD) etc.

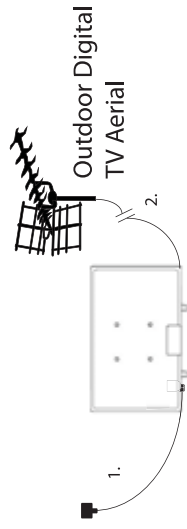
Sky remote code

If you wish to use your Sky remote to operate the TV's basic functions, you will need a Sky remote control (Revision 9 or later) and you will need to program it with the code 2134.

If you wish to use your Sky Q remote to operate the TV's basic functions, you will need to program it with the code 4170.

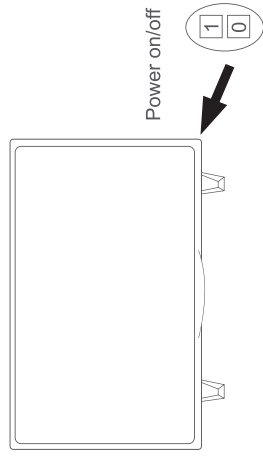


3 Connecting your set



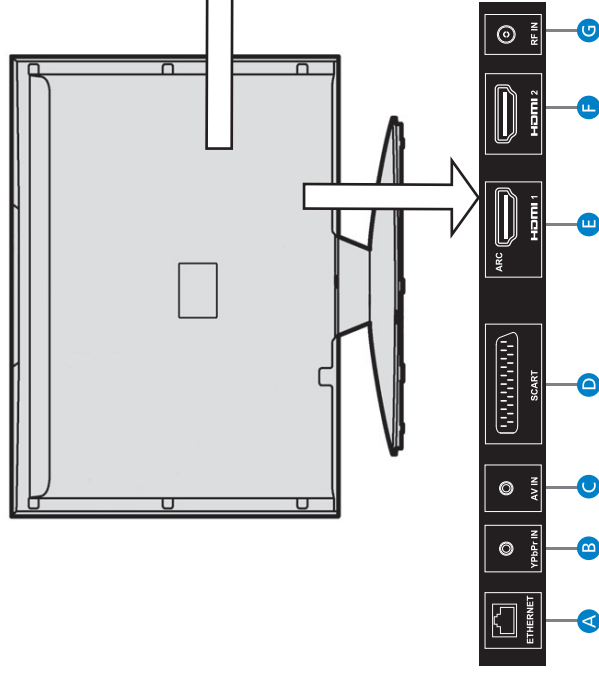
- 1) Connect the TV to your power socket.
- 2) If you wish to use the TV to receive Freeview/Saorview channels, connect the RF input from the TV to your outdoor Digital TV aerial. If you do not wish to receive Freeview/Saorview, skip this step.

4 Locating the Power Switch



Switch on the television using the power on/off switch located on the TV. The standby light will show.

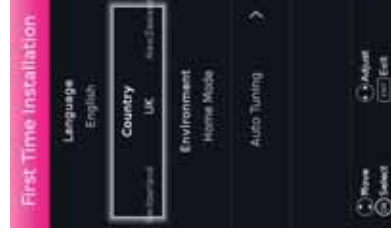
Connectivity



A ETHERNET/LAN*	Network Connection	G RF In	RF TV Aerial Input
B YPbPr	HD input (YPbPr)	H Digital Optical Audio	Digital Optical Audio Output
C AV IN	Audio/Video input	I 1 x USB	USB port
D SCART	SCART input	J EARPHONES	Earphone Input
E HDMI 1	HDMI input (ARC)	K CI CARD IN	Common interface module Input
F HDMI 2	HDMI input		

*The LAN/Ethernet port is used only for Pay TV services and Freeview HD (Freeview services only available in the UK). It is not intended to be used for internet use.

5 First Time Installation



When you first turn on the set, you will be welcomed by the First Time Installation screen as shown above. Once you have decided the options as described below, select Auto Tuning and press OK

Language: Select your preferred on-screen display language. This will change the language in which the menus and associated information is displayed in... When the set up has been completed, this can be changed by selecting Menu > Settings > Language.

Country: Select the correct country in which the set will be used in. This will enable the TV to correctly install the functions applicable in the country of use.

Environment: Use this option to select either Home or Store mode.

HOME MODE is a power saving mode which reduces the energy used by up to 25% (by reducing the power to the LED/LCD panel).

When in STORE MODE the picture will be brighter and you can personalise the settings within the picture settings menu (Contrast, Brightness, Colour etc).

Note: In Home Mode, the TV will switch itself to the standby mode after 4 hours in the event that the buttons on the remote control or TV are not used.